

Bass Clarinet in B♭

il mio bimbo..... tocca di luna.....

Julian Grant

il mio bimbo..... tocca di luna.....

JULIAN GRANT

rocking $\text{♩} = 76$

8 *p*

8 Bsn. 3

16 **A** *mf* 5 Bsn.

27 **B** 2 Ob. 7 *p*

35 *p*

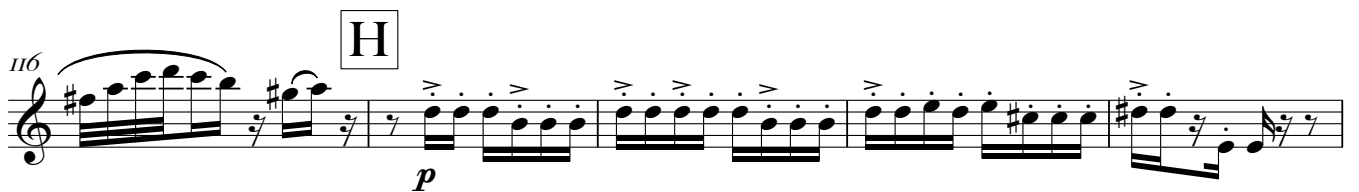
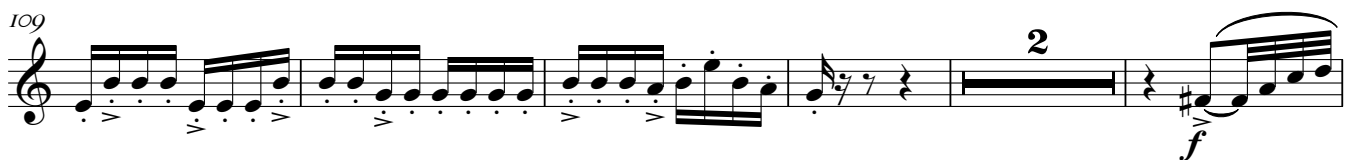
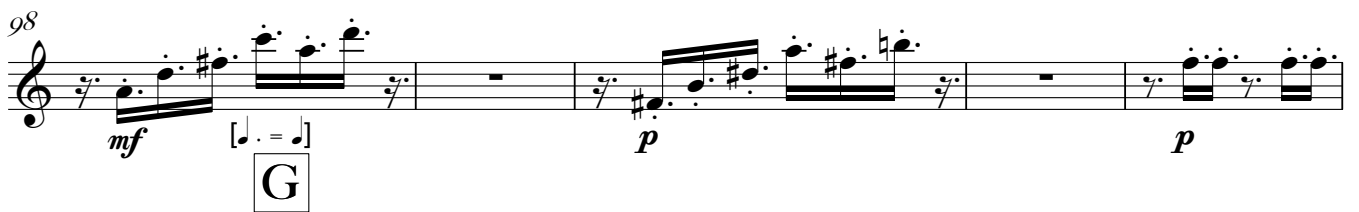
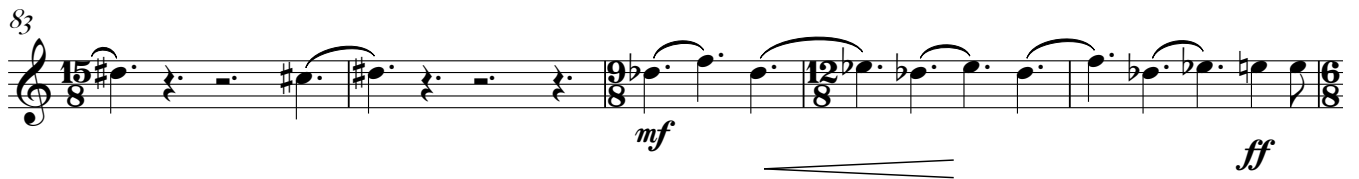
42 2

51 **C** *p* *pp* **D**

61 12 8 *pp*

67 18 8

71 18 8 *p*



131 **I**

p

Staff 131-134: Treble clef, 2/4 time. Measures 131-134 contain eighth-note patterns with accents. Measure 131 starts with a piano (*p*) dynamic. Measure 134 ends with a repeat sign.

135

Staff 135-138: Treble clef, 2/4 time. Measures 135-138 contain eighth-note patterns with accents. Measure 138 ends with a repeat sign and a fermata.

141 **J**

p *f*

Staff 141-144: Treble clef, 2/4 time. Measures 141-144 contain eighth-note patterns with accents. Measure 141 starts with a piano (*p*) dynamic. Measure 144 ends with a repeat sign.

K

[♩ = ♩.] Presto ♩. = 76

p

Staff 148-152: Treble clef, 2/4 time. Measures 148-152 contain eighth-note patterns with accents. Measure 148 starts with a piano (*p*) dynamic. Measure 152 ends with a repeat sign.

153

p *mf* *p*

Staff 153-156: Treble clef, 2/4 time. Measures 153-156 contain eighth-note patterns with accents. Measure 153 starts with a piano (*p*) dynamic. Measure 156 ends with a repeat sign.

162 **L**

p *f*

Staff 162-165: Treble clef, 2/4 time. Measures 162-165 contain eighth-note patterns with accents. Measure 162 starts with a piano (*p*) dynamic. Measure 165 ends with a repeat sign.

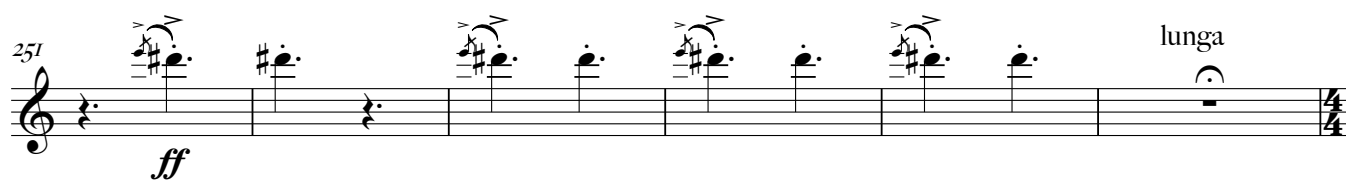
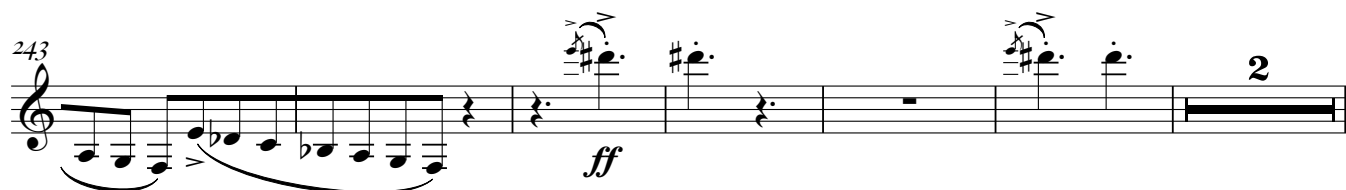
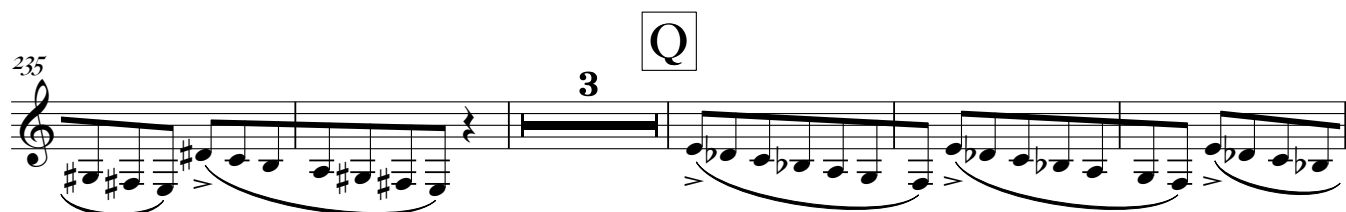
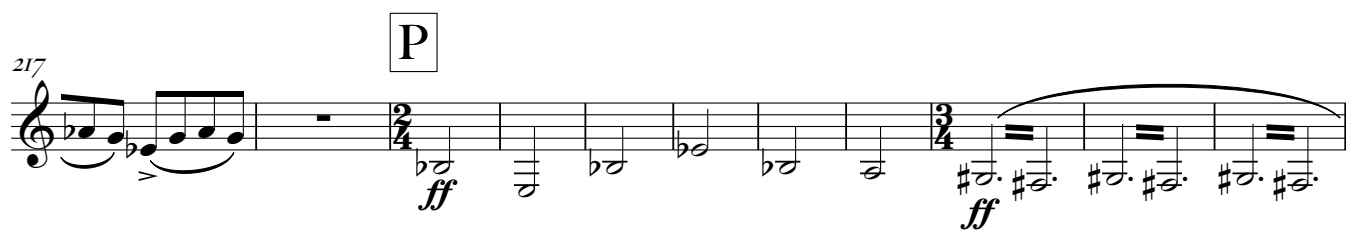
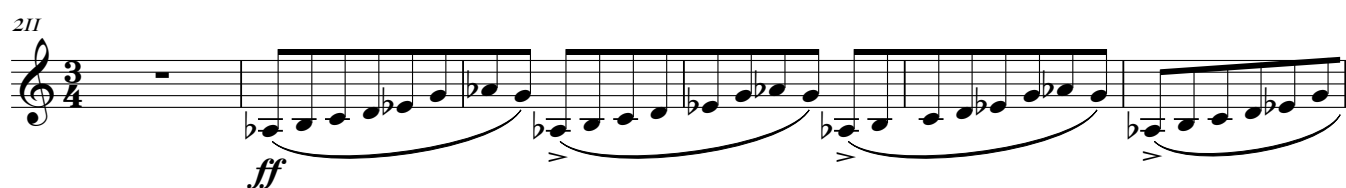
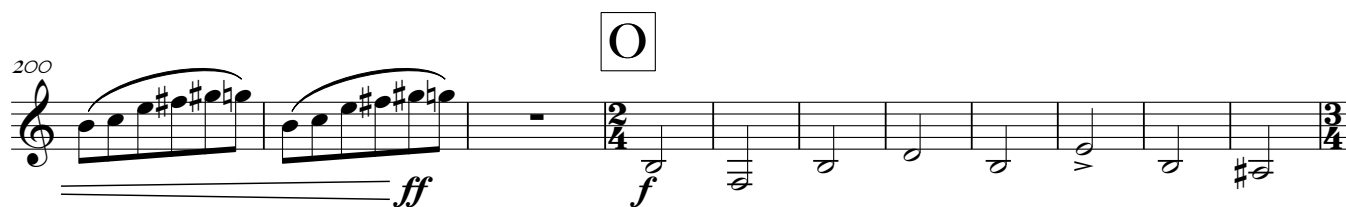
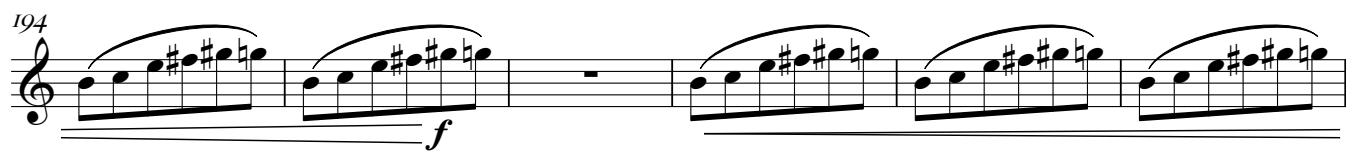
171 **M**

p

Staff 171-174: Treble clef, 2/4 time. Measures 171-174 contain eighth-note patterns with accents. Measure 171 starts with a piano (*p*) dynamic. Measure 174 ends with a repeat sign.

183 **N**

Staff 183-186: Treble clef, 2/4 time. Measures 183-186 contain eighth-note patterns with accents. Measure 183 starts with a piano (*p*) dynamic. Measure 186 ends with a repeat sign.



Bass Clarinet in B \flat Andante $\text{♩} = 76$

257 Ob. R

p mf

263 Quasi adagio $\text{♩} = 52$

p

9

266

8

8

271 S $\text{♩} = 52$

278 $\text{♩} = 52$

p

282

287 T

291

mf p

294

mf p

298

pp

8'23.7"